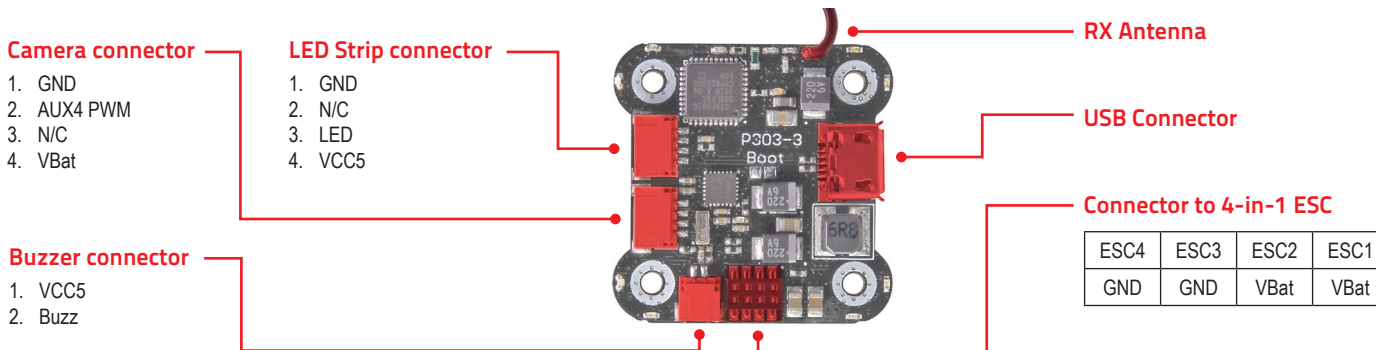
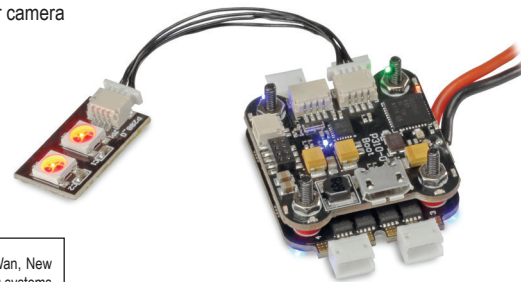


The diagram shows 89186RC. The pin assignments are identical for 89186RC and 89207RC.



FEATURES:

- > 20 x 20 mm mounting holes (28 x 28 mm full size)
- > F3 core
- > Betaflight 3.2 compatible (target SPRacing EVO)
- > MPU6500 gyro
- > Support for 4 DSHOT600 outputs
- > Integrated FrSky D16 receiver with autobind feature
- > Integrated Fmode and ARM LEDs
- > Vbat up to 5 cells (21 V/DC)
- > Internal 5 V regulator – up to 1 A for multicolor LED or camera
- > Integrated Vbat monitor with LED indication
- > AUX4 PWM output for camera control
- > Integrated buzzer driver and connector
- > Extra clean voltage regulators for RX and sensors
- > Single connector to 4-in-1 ESC board ([89187RC](#))



Distributed by Conrad Electronic SE, Klaus-Conrad-Str. 1, D-92240 Hirschau

These operating instructions are published by CEI Conrad Electronic International (HK) Limited, 18th Floor, Tower 2, Nina Tower, No. 8 Yeung Uk Road, Tsuen Wan, New Territories, Hong Kong. All rights including translation reserved. Reproduction by any method, e.g. photocopy, microfilming, or the capture in electronic data processing systems require the prior written approval by the editor. Reprinting, also in part, is prohibited. The operating instructions reflect the current technical specifications at time of print.

© 2019 by CEI Conrad Electronic International (HK) Limited

89186RC_89207RC_v1_0119_02_ds_jh_en_(2)