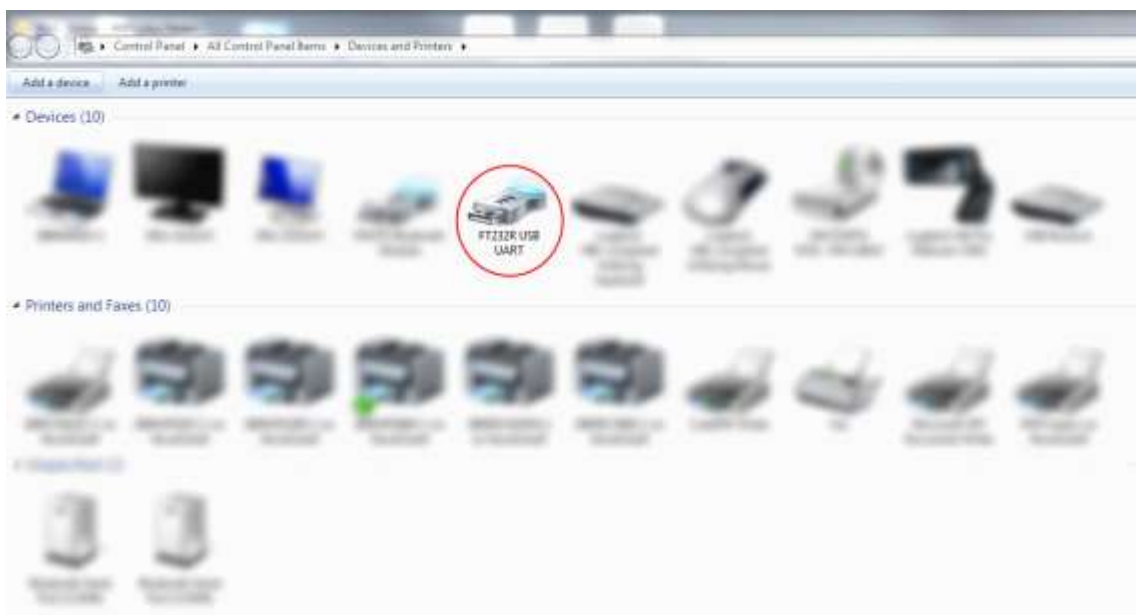


Quick USB to UART Device Driver Installation Guide for Windows 7 (32- and 64-bit)

a) Automatic Device Driver Installation

- 1.) Connect the USB connector of the interface cable to a free USB port of your PC. Do not connect the UART connector of the interface cable until the device driver has been installed successfully.
- 2.) Windows 7 will attempt to install the device driver for the FT232R USB UART adapter automatically. This may take from a few seconds to a few minutes.
- 3.) After the device driver has been installed successfully you may need to determine the assigned COM port manually. Access the “Devices and Printers” control panel section. Refer to image below.

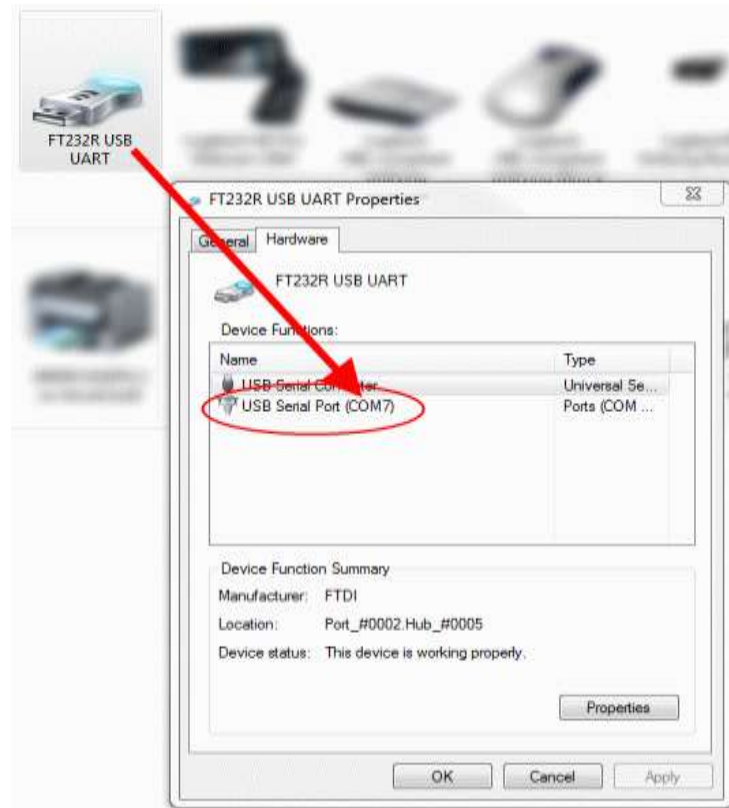
Start -> “Devices and Printers”



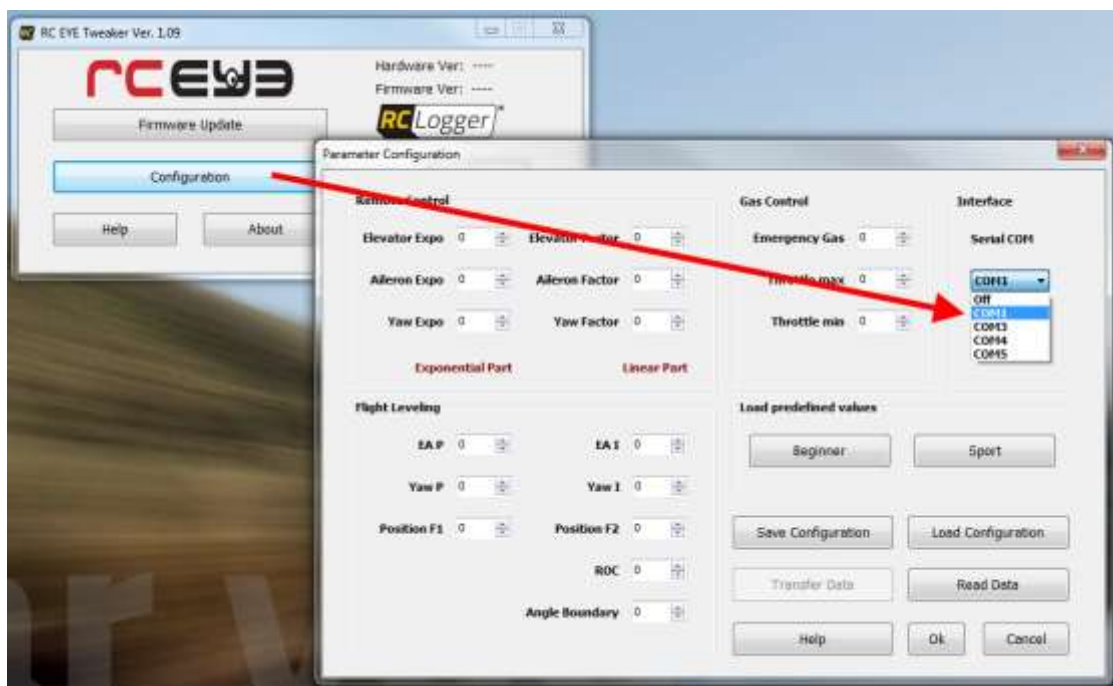
Device name: “*FT232R USB UART*”

Right click on the device icon to view the device “Hardware” details as shown in the image below.

Choose the COM port assigned by your operating system to configure the correct communication COM port of the “RC EYE Tweaker” PC software. The automatic assigned COM port is indicated at the “Hardware” tab of the device properties. Refer to image below.



Choose the COM port as indicated from the device properties:

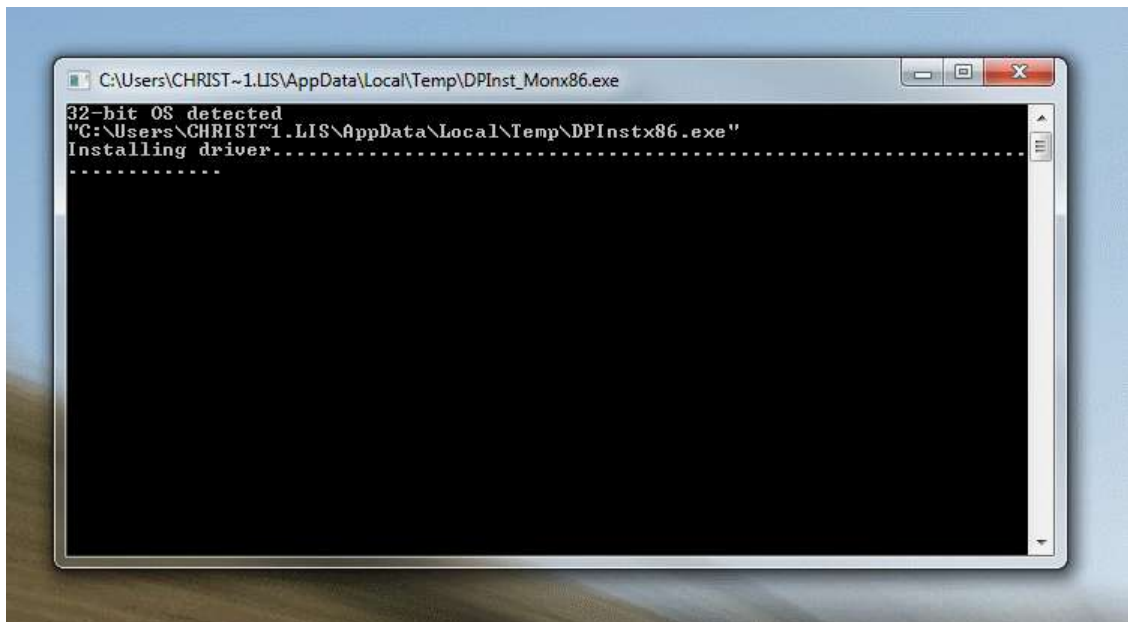


In case the automatic device driver installation has failed, please install the device driver package manually. The driver package is available at RC Logger's website [software/download](http://rclogger.com/software/download) section. You may need Administrator privileges to install the device driver!

- 4.) You may now use the “RC EYE Tweaker” PC software to adjust flight parameters to your individual needs, or to transfer important firmware updates.

b) Manual Device Driver Installation

- 1.) Download the device driver package for Windows operating systems at RC Logger’s website software/download section. The file name is “FT_232R_USB_UART_CDM20814_Setup.exe”.
- 2.) Execute the downloaded file with Administrator privileges! The following command prompt window will appear. Refer to the image below.



- 3.) It may take a few minutes until the progress bar has completed indicating the device driver installation. After installation has been completed please verify and check the assigned COM port as explained in section “a) 3.)” of this document.
- 4.) You may now use the “RC EYE Tweaker” PC software to adjust flight parameters to your individual needs, or to transfer important firmware updates.